



+ HARNESSING THE POWER OF AI FOR
**MARITIME
INNOVATION**



...
Enabling smarter, efficient, and sustainable maritime operations

 **OceanAI**
Member of the MariApps Group



Enhance Efficiency, Safety, and Compliance with AI-Powered Maritime Management Tools

- + OceanAI, member of the MariApps Group, is dedicated to revolutionizing the maritime industry through advanced artificial intelligence. Our mission is to seamlessly integrate AI technologies into MariApps' flagship digital solution software suite, *smartPAL*, delivering unparalleled value to our clients.



AI Integration:

We collaborate closely with MariApps Marine Solutions and *cruisePAL* to develop cutting-edge AI features, optimizing maritime and cruise operations, and improving decision-making.



Customized Solutions:

We tailor AI solutions to meet the specific requirements of clients, ensuring maximum value and efficiency.

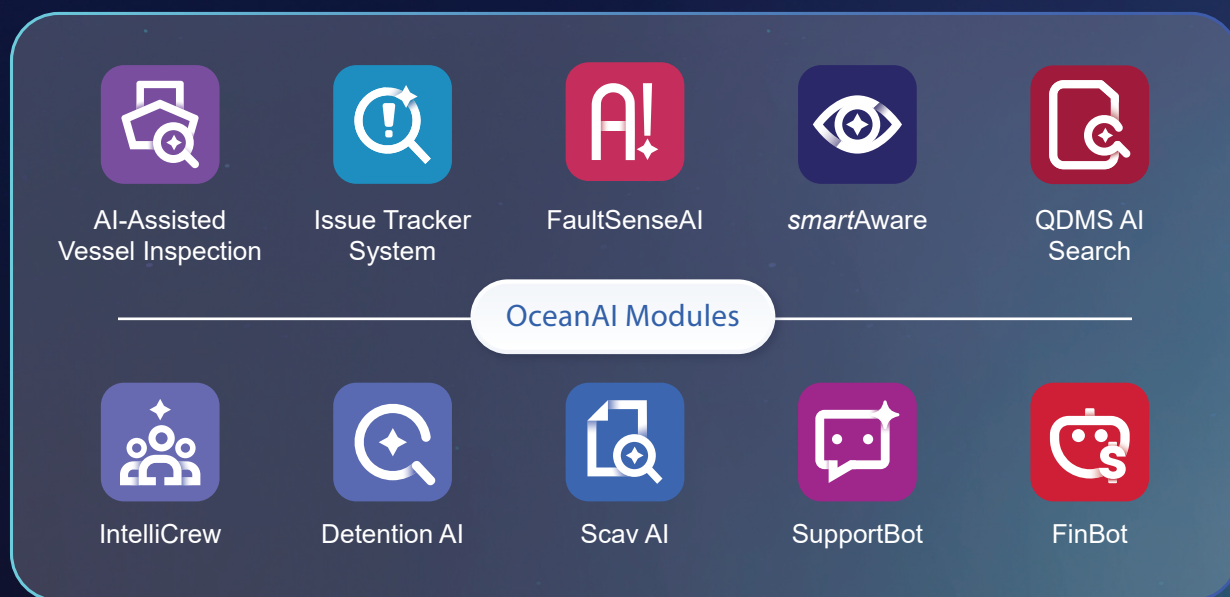


Beyond Maritime:

Our expertise extends beyond the maritime industry. We offer innovative AI solutions to clients across various sectors, driving growth and innovation.

Transforming Vessel Operations With AI Technology

+ Enhance efficiency, safety, and compliance with advanced maritime management tools



AI-Assisted Vessel Inspection

+ **Enhanced Vessel Inspections Through AI-driven Data Analysis**
 The AI-Assisted Vessel Inspection module revolutionizes how superintendents conduct routine and specialized checks. By analyzing historical data sets and risk profiles, the tool generates intelligent question sets and checklists designed to uncover hidden vulnerabilities. The result is more focused, data-driven inspections, reduced oversight, and a proactive stance against future calamities—ultimately improving vessel reliability and regulatory compliance.



Features

- + Tailored Inspection Criteria:**
Generates customized question sets and checklists based on historical data and risk profiles to ensure thorough inspections.
- + Data-Driven Insights:**
Leverages AI to analyze past inspection data, identifying patterns and potential risks for proactive mitigation.
- + Real-Time Guidance:**
Provides superintendents with intelligent, context-aware prompts during inspections to enhance accuracy and efficiency.
- + Compliance Optimization:**
Aligns inspection processes with regulatory standards, reducing the risk of non-compliance.
- + Seamless Integration:**
Works within the *smartPAL* ecosystem, ensuring compatibility with existing maritime workflows.



User Benefits

- ◆ Enhanced Safety
- ◆ Improved Compliance
- ◆ Increased Efficiency
- ◆ Proactive Risk Management
- ◆ Scalable Solution



Issue Tracker System

+ **Improve Reliability by Utilizing AI-driven Vessel Issue Management**
 The Issue Tracker System module leverages AI to meticulously log, analyze, and resolve vessel-related challenges. It identifies open and closed issues, traces their root causes, and suggests resolution criteria based on historical data. Teams can review past incidents, spot recurring trends, and implement targeted solutions, fostering a culture of continuous improvement and ensuring that maintenance actions are always informed by a solid foundation of factual insight.



Features

- + Intelligent Issue Logging:**
Automatically tracks and categorizes open and closed issues for streamlined management.
- + Root Cause Analysis:**
Uses AI to trace the origins of issues, providing actionable insights for resolution.
- + Resolution Suggestions:**
Generates data-driven recommendations for resolving issues based on historical patterns.
- + Trend Identification:**
Analyzes past incidents to detect recurring problems, enabling proactive maintenance strategies.
- + smartPAL Integration:**
Seamlessly integrates with the *smartPAL* platform, enhancing compatibility with existing workflows.

User Benefits

- ◆ Improved Reliability
- ◆ Data-Driven Decisions
- ◆ Time Savings
- ◆ Proactive Maintenance
- ◆ Continuous Improvement



AI | FaultSenseAI

+ AI-driven Proactive Engine Health Monitoring

The FaultSenseAI module revolutionizes maritime maintenance by leveraging advanced AI to detect, diagnose, and predict equipment faults with unparalleled accuracy. Integrated with the *smartPAL* platform, it analyzes real-time and historical data to identify anomalies, trace root causes, and recommend proactive maintenance strategies. This intelligent system ensures vessels operate at peak performance, minimizing downtime and enhancing operational reliability.



Features

- + Anomaly Detection:**
Continuously monitors equipment data to identify deviations and potential faults in real time.
- + Root Cause Analysis:**
Uses AI to pinpoint the underlying causes of equipment issues, enabling precise interventions.
- + Predictive Maintenance:**
Forecasts potential failures based on historical and real-time data, allowing preemptive action.
- + Smart Recommendations:**
Provides data-driven maintenance suggestions to optimize equipment performance.
- + smartPAL Integration:**
Seamlessly integrates with the *smartPAL* platform, enhancing compatibility with existing workflows.



User Benefits

- ◆ Reduced Downtime
- ◆ Enhanced Reliability
- ◆ Cost Savings
- ◆ Improved Safety
- ◆ Operational Efficiency



| smartAware

+ Real-Time Surveillance for Safer Navigation

The *smartAware* module transforms maritime situational awareness by harnessing AI to deliver real-time insights and predictive analytics. Integrated with the *smartPAL* platform, it processes vast amounts of data from vessel sensors, weather systems, and operational inputs to provide actionable intelligence. This empowers crews to make informed decisions, anticipate risks, and optimize performance, ensuring safer and more efficient maritime operations.



Features

- + Real-Time Monitoring:**
Continuously analyzes data from vessel sensors and external sources for up-to-date situational awareness.
- + Predictive Analytics:**
Forecasts potential risks and operational challenges using AI-driven insights.
- + Decision Support:**
Provides actionable recommendations to crews for rapid, informed decision-making.
- + Weather Integration:**
Incorporates real-time weather data to enhance navigation and operational planning.
- + smartPAL Compatibility:**
Seamlessly integrates with the *smartPAL* platform for cohesive maritime workflows.

◆ User Benefits

- ◆ Enhanced Safety
- ◆ Improved Decision-Making
- ◆ Operational Efficiency
- ◆ Proactive Risk Mitigation
- ◆ Cost Savings



QDMS AI Search

+ Effortless, AI-driven Document Search

The QDMS AI Search module is an intelligent, AI-enhanced extension of *smartPAL*'s Quality Document Management System, designed to streamline access to critical maritime documents, procedures, forms, and circulars. By leveraging advanced natural language processing (NLP) and vector database technology, QDMS AI Search transforms traditional document management into an interactive, conversational experience. Its intuitive chatbot interface and powerful search capabilities deliver real-time, context-aware insights, ensuring users across operational and compliance roles can quickly access accurate information.



Features

- + AI-Powered Search Bar:**
Utilizes natural language queries to retrieve relevant documents, articles, and forms with contextual summaries.
- + Conversational Chatbot:**
Enables real-time Q&A with context-aware responses drawn from the organization's document repository.
- + Contextual Summarization:**
Provides concise previews of matched content, helping users assess relevance quickly.
- + Follow-Up Question Handling:**
Supports multi-turn interactions with contextual memory for in-depth querying.
- + Feedback System:**
Allows users to rate responses, with the ability to regenerate disliked answers for continuous improvement.
- + Copy Functionality:**
Enables easy copying of chatbot responses for sharing or inclusion in reports.

◆ User Benefits

- ◆ Enhanced Productivity
- ◆ Improved Compliance
- ◆ Reduced Errors
- ◆ Cost Efficiency
- ◆ User-Friendly Experience





IntelliCrew

+ The Future of Crew Management

The IntelliCrew module is an AI-powered crew management solution designed to optimize maritime workforce operations. Integrated with the *smartPAL* platform, it leverages advanced analytics to streamline crew scheduling, compliance tracking, and performance monitoring. By analyzing crew data and operational needs, IntelliCrew ensures efficient resource allocation, enhances regulatory adherence, and improves overall crew productivity, making it an essential tool for modern maritime operations.



Features

- + AI-Driven Scheduling:**
Optimizes crew assignments based on skills, availability, and operational requirements.
- + Compliance Monitoring:**
Tracks certifications, work hours, and rest periods to ensure regulatory compliance.
- + Performance Analytics:**
Provides insights into crew performance, identifying areas for improvement and training needs.
- + Real-Time Updates:**
Delivers instant notifications for schedule changes, compliance deadlines, and operational updates.
- + smartPAL Integration:**
Seamlessly connects with the *smartPAL* ecosystem for cohesive workforce management.

◆ User Benefits

- ◆ Enhanced Efficiency
- ◆ Regulatory Compliance
- ◆ Improved Productivity
- ◆ Real-Time Decision Support
- ◆ Cost Savings



🔍 | Detention AI

+ Predict, Prevent, and Manage Detentions

The Detention AI module revolutionizes the management of vessel detention risks by leveraging advanced artificial intelligence to predict, analyze, and mitigate potential delays. Integrated with the HSEQ module, it processes real-time data from port operations, compliance records, and historical trends to identify risks and recommend preventive actions. Detention AI empowers maritime operators to minimize costly delays, ensure compliance, and optimize port turnaround times.



Features

- + Risk Prediction:**
Uses AI to forecast potential detention risks based on historical and real-time data.
- + Compliance Analysis:**
Monitors regulatory requirements and flags potential compliance issues before port inspections.
- + Actionable Recommendations:**
Provides data-driven strategies to mitigate detention risks and streamline operations.
- + Real-Time Monitoring:**
Tracks vessel and port activities to deliver up-to-date insights for proactive decision-making.
- + HSEQ Integration:**
Seamlessly connects with the HSEQ module's ecosystem for cohesive operational management.

🌟 User Benefits

- 🌟 Reduced Delays
- 🌟 Enhanced Compliance
- 🌟 Operational Efficiency
- 🌟 Cost Savings
- 🌟 Improved Turnaround



Scav AI

+ AI-Powered Scavenge Inspections

The ScavAI module is an advanced AI-powered solution designed to optimize the performance of scavenging systems in maritime engines. Integrated with the *smartPAL* platform, it analyzes real-time and historical engine data to enhance fuel efficiency, reduce emissions, and improve overall engine reliability. By providing actionable insights and predictive maintenance recommendations, ScavAI empowers maritime operators to achieve sustainable and cost-effective operations.



Features

- + Real-Time Engine Monitoring:**
Tracks scavenging system performance using real-time engine data.
- + Predictive Maintenance:**
Forecasts potential issues in scavenging systems to prevent failures and optimize maintenance schedules.
- + Fuel Efficiency Optimization:**
Analyzes combustion processes to recommend adjustments for improved fuel economy.
- + Emission Reduction:**
Identifies opportunities to minimize emissions, supporting environmental compliance.
- + smartPAL Integration:**
Seamlessly connects with the *smartPAL* ecosystem for cohesive engine management

◆ User Benefits

- ◆ Cost Savings
- ◆ Enhanced Engine Reliability
- ◆ Environmental Compliance
- ◆ Operational Efficiency
- ◆ Sustainable Operations



| SupportBot

+ Meet Your Efficient AI Assistant

The SupportBot module redefines maritime support by delivering an intelligent, AI-powered solution that eliminates the inefficiencies of traditional ticket-based systems. Integrated with the *smartPAL* platform, SupportBot leverages historical data from JIRA tickets and PAL manuals to provide instant query resolution, step-by-step guidance, and seamless escalation when needed. This scalable, conversational platform empowers users with self-service capabilities, reducing support ticket volumes and enhancing operational efficiency.

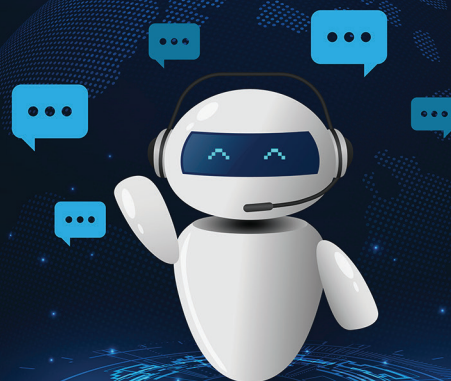


Features

- + Real-Time Query Resolution:**
Delivers instant answers using a knowledge base built from historical ticket data and support documentation.
- + Step-by-Step Workflow Guidance:**
Integrates with *smartPAL* to guide users through complex maritime processes, reducing dependency on manual support.
- + Conversational Interface:**
Offers an intuitive, chat-based platform accessible to both technical and non-technical users.
- + Context-Aware Responses:**
Uses advanced natural language understanding and vector-based retrieval for precise, tailored answers.
- + Seamless Escalation:**
Allows users to escalate unresolved issues to human agents within the same interface, preserving context.
- + Knowledge Base Auto-Generation:**
Automatically updates its knowledge base by analyzing resolved tickets and manuals.
- + Multi-User Scalability:**
Handles high volumes of concurrent users without compromising performance.

◆ User Benefits

- ◆ Faster Resolution Times
- ◆ Cost Efficiency
- ◆ Enhanced User Satisfaction
- ◆ Operational Efficiency
- ◆ Scalable Solution
- ◆ Regulatory Compliance





+ Your AI Financial Assistant

The FinBot module is an AI-powered virtual financial assistant designed to simplify interaction with financial data for maritime businesses. Integrated with the *smartPAL* platform and requiring the Financial Reporting Module, FinBot enables users to query financial data in natural language, delivering instant answers with interactive charts, tables, and visualizations. By automating recurring financial reports and providing real-time insights, FinBot streamlines financial operations, enhances decision-making, and boosts efficiency for staff ashore.



Features

- + Natural Language Processing:**
Allows users to ask financial questions in plain language, receiving clear, accurate responses with visualizations.
- + On-Demand Data Insights:**
Provides real-time answers with interactive charts, tables, and graphs for quick financial analysis.
- + Automated Reporting:**
Schedules and generates recurring financial reports in PDF format, adaptable to changing business needs.
- + Contextual Memory:**
Retains conversation history for seamless follow-up questions and in-depth financial exploration.
- + Report Management:**
Enables easy viewing, downloading, and updating of scheduled reports for efficient workflows.
- + smartPAL Integration:**
Works seamlessly with the *smartPAL* platform and Financial Reporting Module for cohesive financial management.

◆ User Benefits

- ◆ Time Efficiency
- ◆ Faster Decision-Making
- ◆ Improved Workflow
- ◆ Consistent Reporting
- ◆ Enhanced Productivity

* Disclaimer: FinBot requires the activation of *smartPAL*'s financial modules to function. Clients must have these modules implemented within their *smartPAL* ecosystem to fully utilize FinBot's capabilities. Without these prerequisites, FinBot cannot be deployed, as its functionality depends on seamless integration with these financial tools to deliver accurate data insights and automated reporting.





Global Presence



- GERMANY
- SINGAPORE
- INDIA
- JAPAN
- USA
- UNITED KINGDOM
- POLAND
- AUSTRALIA
- CHINA



MariApps
Group



Explore The Future of Automated Processes

+ Ready to utilize the potential of AI?
Contact us today to explore how our AI-powered solutions can transform your business. Whether you are looking to integrate AI into an existing system or discover new opportunities, our team is ready to assist you.



Email us:
contact@oceanai.ai



Visit our website:
<https://oceanai.ai/>



SCAN ME !



OceanAI

Member of the MariApps Group

